

GUIDELINE 4
INSTALLATION
MANUAL
v 1.0

Table of Content

Table of Contents

1.	Introduction to GuideLine Installation	3
1.1	Introduction to License Manager	3
1.2	NX and Links	4
2.	GuideLine installation: local configuration	5
2.1	Installing GuideLine Local	5
3.	GuideLine installation: Server-Client configuration	7
3.1	Installing GuideLine Server	7
3.2	Installing GuideLine Server + Local	9
3.3	Installing GuideLine Client	11
4.	Using GuideLine with the License Manager	13
4.1	First Time Activation	13
4.1.1	License activation on a server	14
4.1.2	Checking the service status	14
4.1.3	Current License Info	15
4.2	Upgrade Node Locked License to a Floating License	16
4.3	Troubleshooting during Activation	17
4.4	TimeOut	17

1. Introduction to GuideLine Installation

1.1 Introduction to License Manager

License Manager is a software that allows several alternatives in installing GuideLine, each one of them addressing different needs and having specific advantages. It supports two license types:

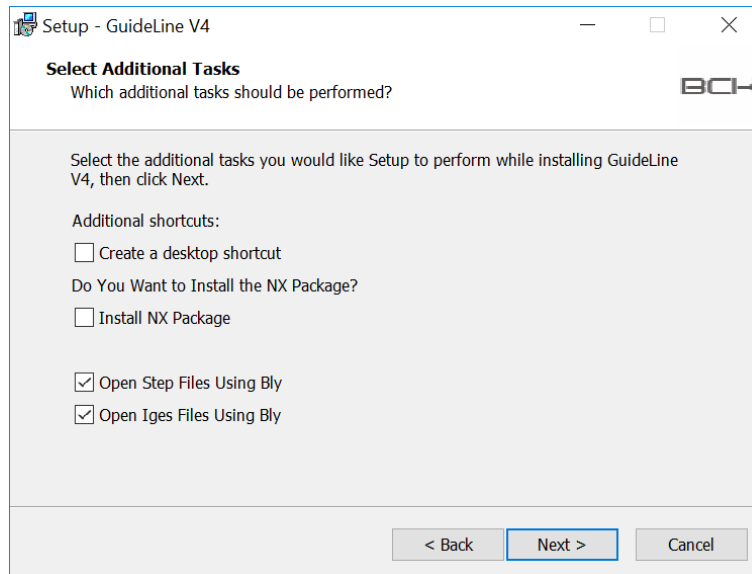
- Node-locked: this license is linked to the PC where GuideLine and License Manager are installed. It enables one user to run GuideLine, which is the local user logged into the machine (no network access);
- Floating: this allows the usage of GuideLine to multiple users within a network. It is physically installed on the machine where the License Manager is installed (License Server) and allow the usage of GuideLine to as many concurrent users as included in the activation code.

It is important to note that License Manager is a separate software than GuideLine itself: this offers a further level of flexibility allowing the server/client installation of GuideLine. That configuration can be advantageous particularly for large organizations, since the SW can be centralized in a single installation, accessed by network users, and maintained from a single instance instead of several local installations.

To resume, please refer to the table below:

	LOCAL GUIDELINE INSTALLATION	SERVER INSTALLATION
NODE-LOCKED LICENSE	<p>GuideLine and License Manager are both locally installed into the PC that runs GuideLine.</p> <p>Any user of the PC can run GuideLine, one at a time</p>	<p>GuideLine is installed on a server, but the license is local.</p> <p>Any user of the PC can run GuideLine, one at a time, but GuideLine is installed centrally on the server (i.e. sharing the components' library)</p>
FLOATING LICENSE	<p>License Manager is installed on a server and GuideLine is installed locally.</p> <p>Licenses are managed by the server, therefore any network user having GuideLine installed locally can run it.</p> <p>Maximum concurrent users are limited by the license code.</p> <p>GuideLine is managed locally (i.e. components' library may be different)</p>	<p>Both GuideLine and LM are installed on a server.</p> <p>Licenses are managed by the server; therefore, any network user can run GuideLine.</p> <p>Maximum concurrent users are limited by the license code.</p> <p>GuideLine is managed centrally on the server (i.e. sharing the components' library)</p>

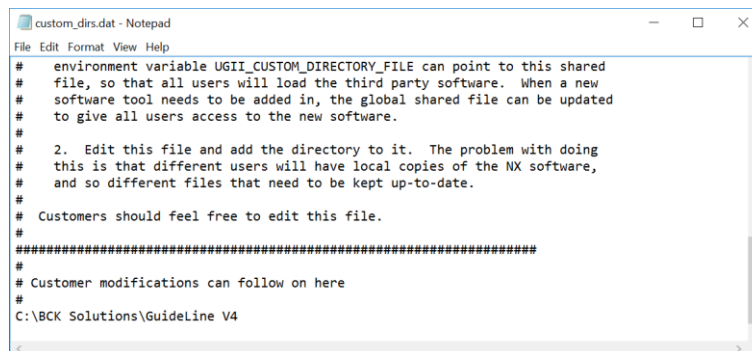
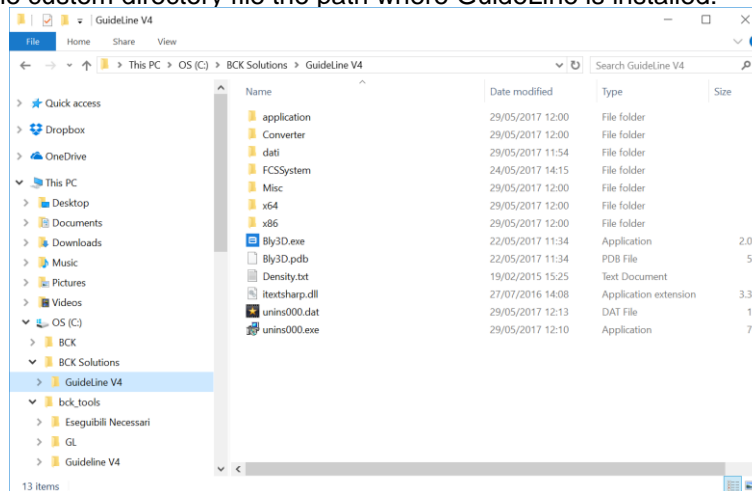
1.2 NX and Links



Install NX add to the Library the prt files and an NX integration with Siemens NX.

In order to use the integration between NX and GuideLine an extra (manual) step is required:

- 1) Open NX->Information->NX Log File
- 2) Edit-> Find
- 3) Find the value for UGII_CUSTOM_DIRECTORY_FILE
- 4) Open the custom directory File
- 5) Add to the custom directory file the path where GuideLine is installed:



- 6) If the GuideLine is on the server, execute caspol.bat (caspol_x64.bat for X64 Machines)

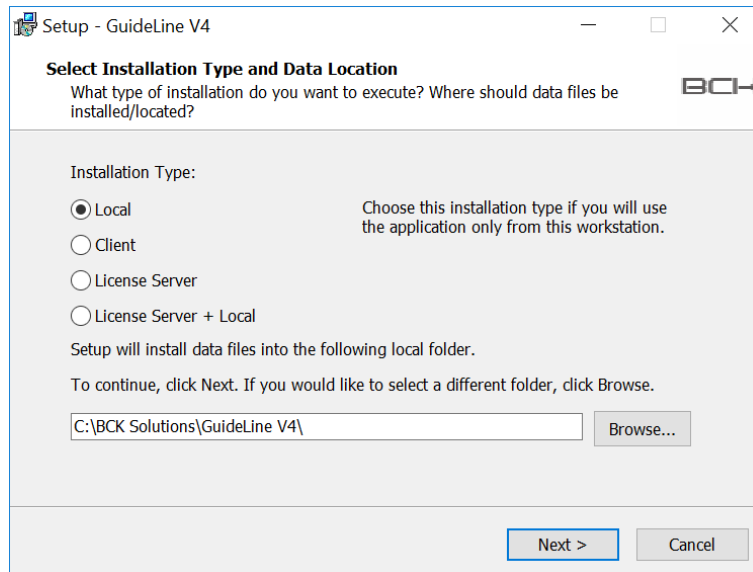
2. GuideLine installation: local configuration

This configuration must be used with node-locked license, which can be accessed by the machine where it is installed only. It installs the software components and the license manager on the local machine (see [Introduction to License Manager](#) for more details).

Please, note that a local installation can be use a floating license accessing a separate license server too (see [Upgrade Node Locked License to a Floating License](#)).

2.1 Installing GuideLine Local

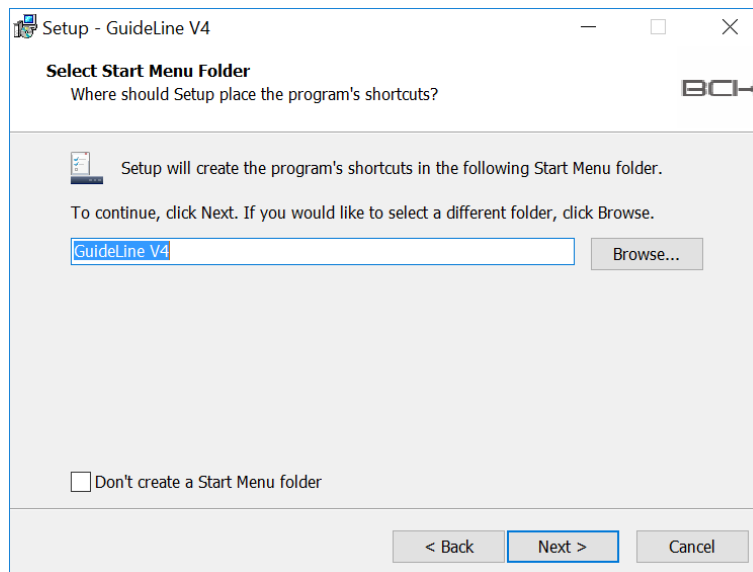
Launch “GuideLine_V4_4.0.1.1.exe” and select “Local” from the installation type window (see below).



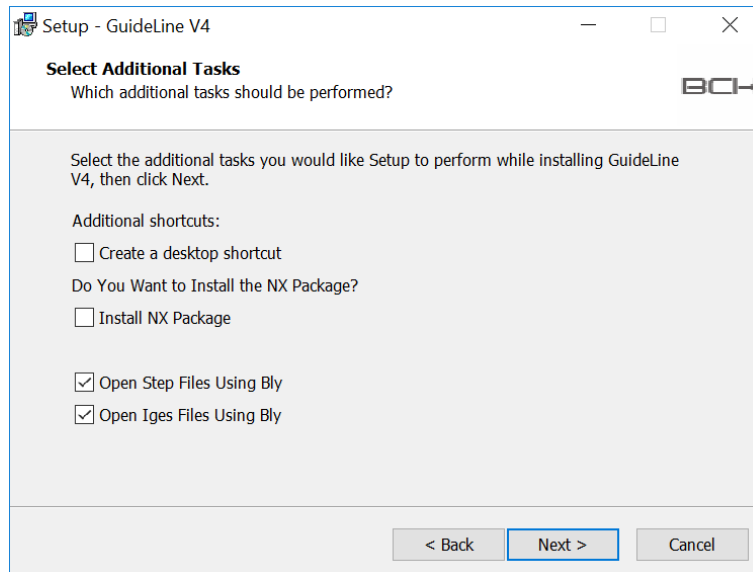
Select folder installation by clicking “Browse” and click “Next”.

IMPORTANT: although GuideLine will install correctly, we recommend not to install the software in a folder under “C:\Program Files\...”, since Windows will set permissions that will prevent GuideLine to import correctly custom components. Those permissions are not editable, even for an administrator. A path like “C:\BCK Solutions\GuideLine V4\” will be safer.

In the following window, specify the folder’s name that will appear on Window’s start menu and press “Next”

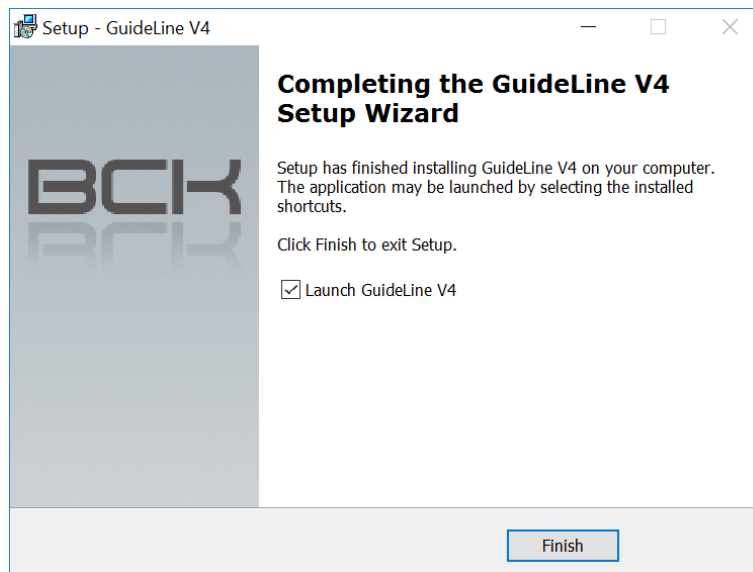


The Additional Tasks window will display:



“Install NX Package” installs GuideLine’s elements that enable the integration with Siemens NX. For further details, please, refer to [NX and Links](#).

On the resume window, press “Install” if you confirm the installation or “Back” to modify it. From the final window, GuideLine can be launched straight away.

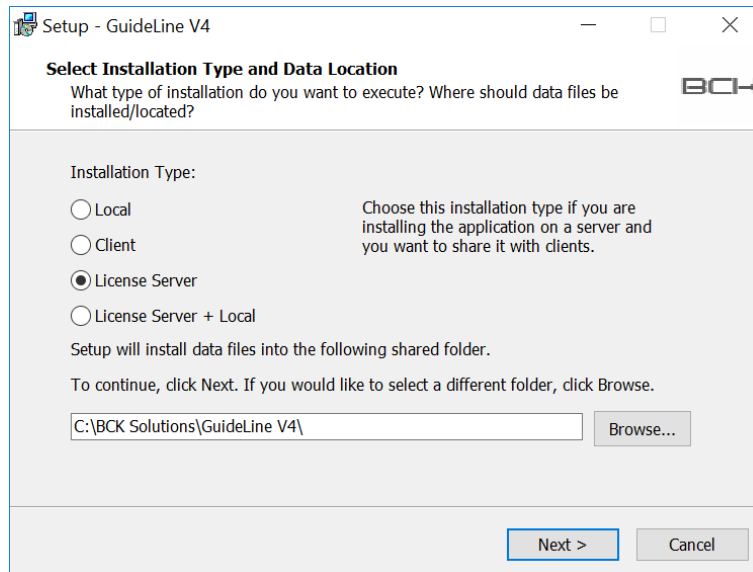


3. GuideLine installation: Server-Client configuration

This configuration must be used with floating licenses, which can be accessed by more than a user on different machines in the network. It requires the installation of GuideLine Server onto a PC that will manage the access to the license (from now on “Server”) and the installation of one GuideLine Client (“Client”) on each of the PC that licenses must be accessed from.

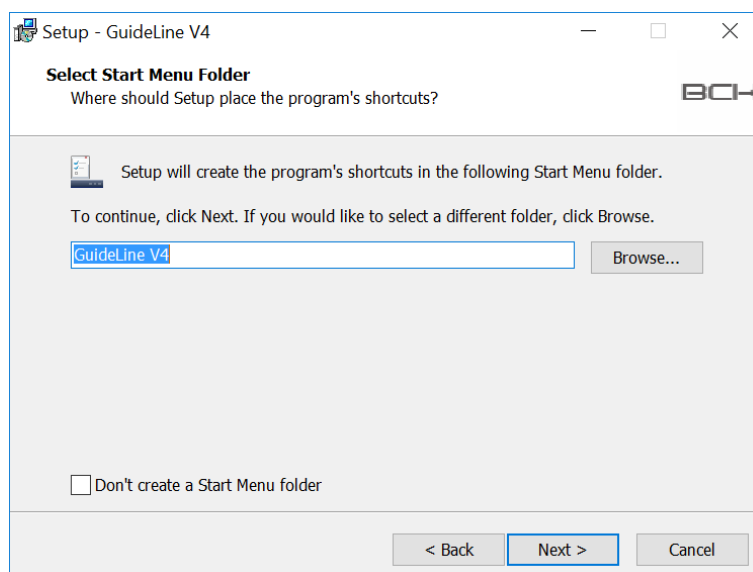
3.1 Installing GuideLine Server

This option installs License Manager. To begin with the installation, launch “GuideLine_V4_4.0.1.1.exe” and select “License Server” from the installation type window (see below).

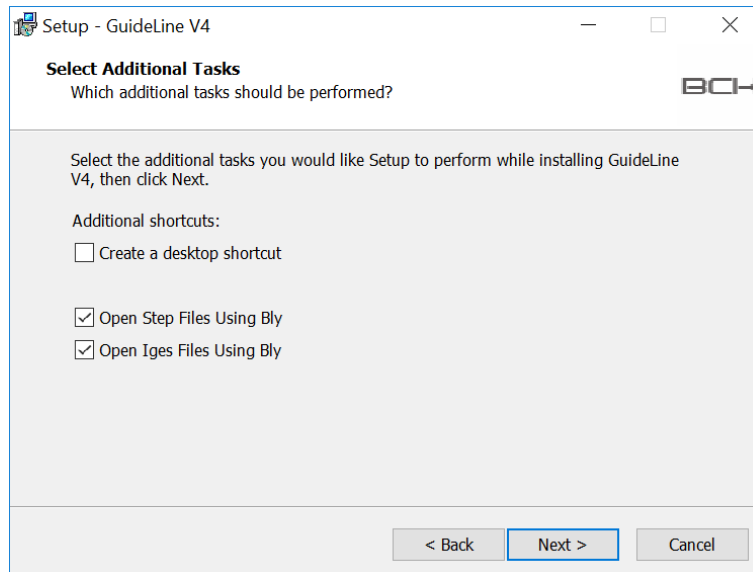


IMPORTANT: although GuideLine will install correctly, we recommend not to install the software in a folder under “C:\Program Files\...”, since Windows will set permissions that will prevent GuideLine to import correctly custom components. Those permissions are not editable, even for an administrator. A path like “C:\BCK Solutions\GuideLine V4\” will be safer.

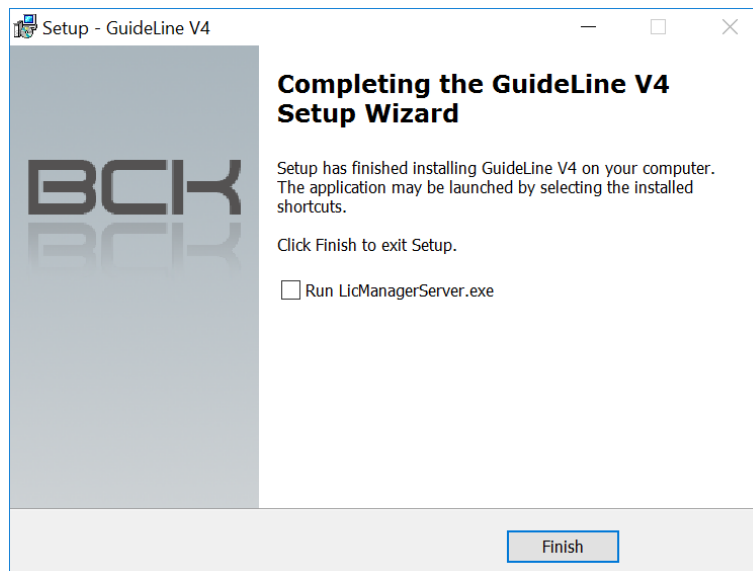
In the following window, specify the folder’s name that will appear on Window’s start menu and press “Next”



The Additional Tasks window will display:

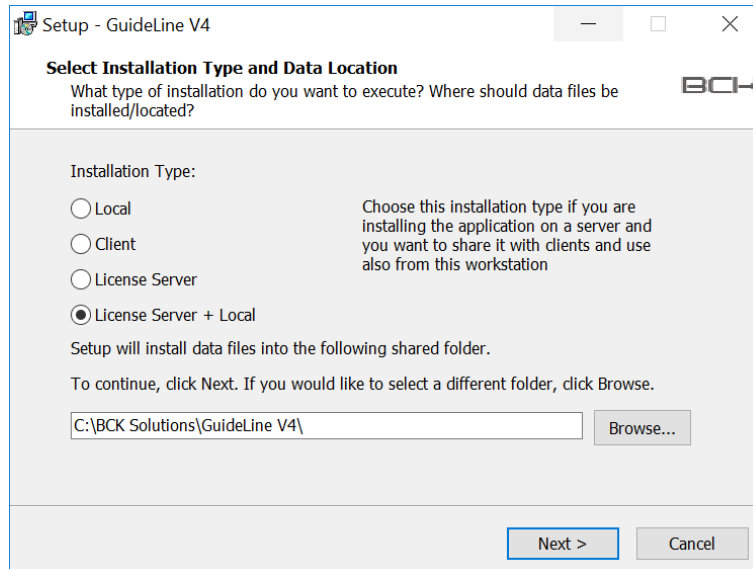


When the setup is done please DO NOT CHECK the “Run LicenseManager.exe” box: it must be run as administrator later (see [Entering the Activation Code](#)). Click Finish and exit from setup:



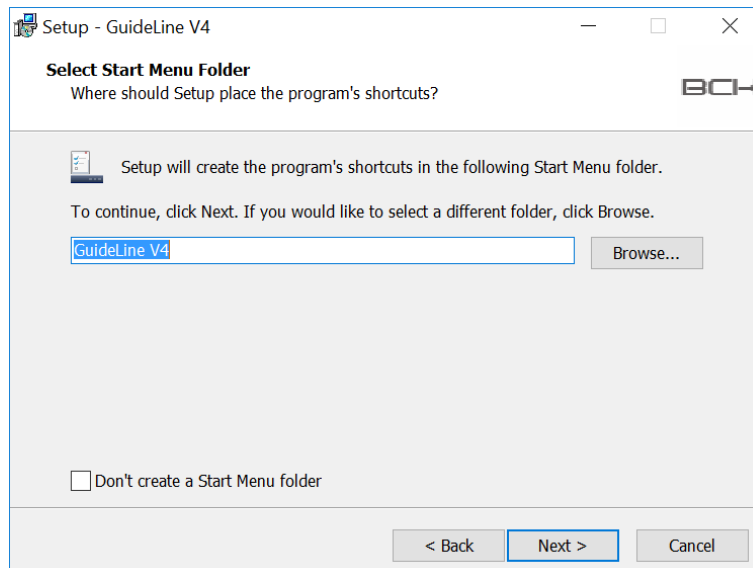
3.2 Installing GuideLine Server + Local

This option installs License Manager and GuideLine application that can be used locally and accessed by clients too. To begin with the installation, launch “GuideLine_V4_4.0.1.1.exe” and select “License Server + Local” from the installation type window (see below).

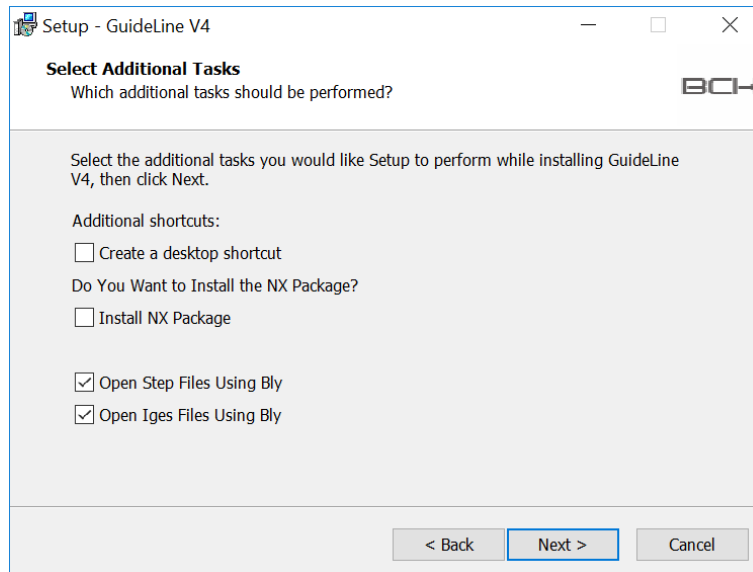


IMPORTANT: although GuideLine will install correctly, we recommend not to install the software in a folder under “C:\Program Files\...”, since Windows will set permissions that will prevent GuideLine to import correctly custom components. Those permissions are not editable, even for an administrator. A path like “C:\BCK Solutions\GuideLine V4\” will be safer.

In the following window, specify the folder’s name that will appear on Window’s start menu and press “Next”

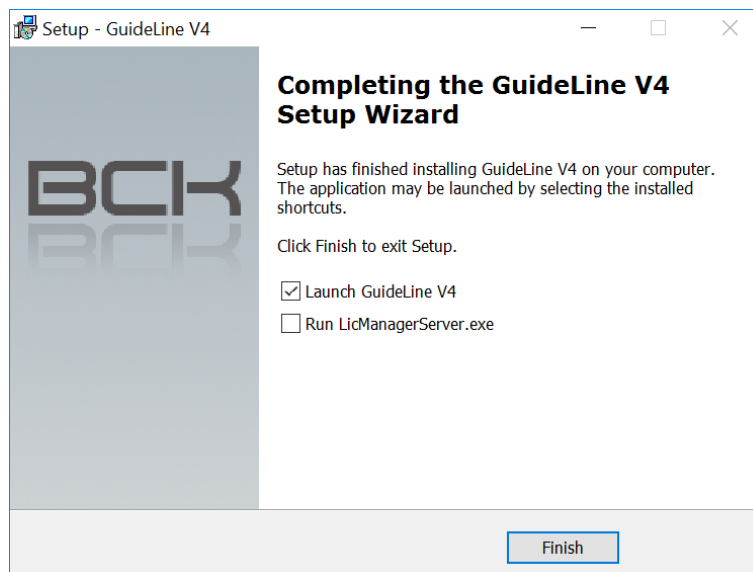


The Additional Tasks window will display:



“Install NX Package” installs GuideLine’s elements that enable the integration with Siemens NX. For further details, please, refer to [NX and Links](#).

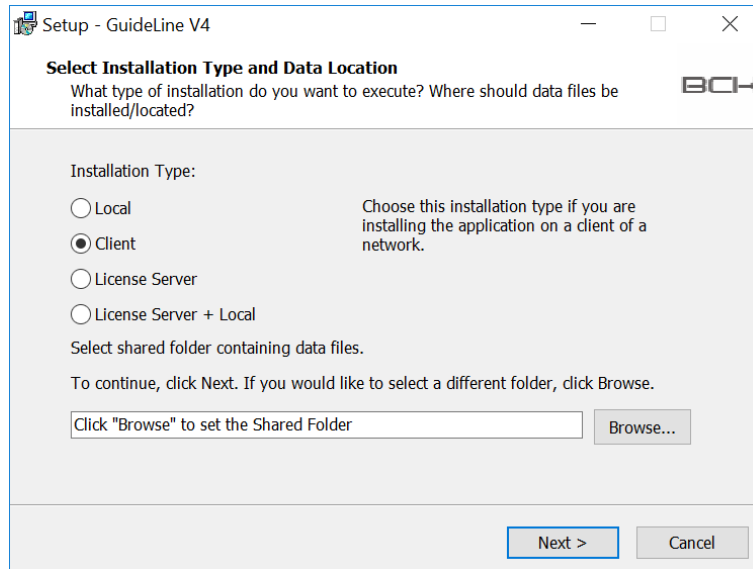
When the setup is done please DO NOT CHECK the “Run LicenseManager.exe” box: it must be run as administrator later (see [Entering the Activation Code](#)). Click Finish and exit from setup:



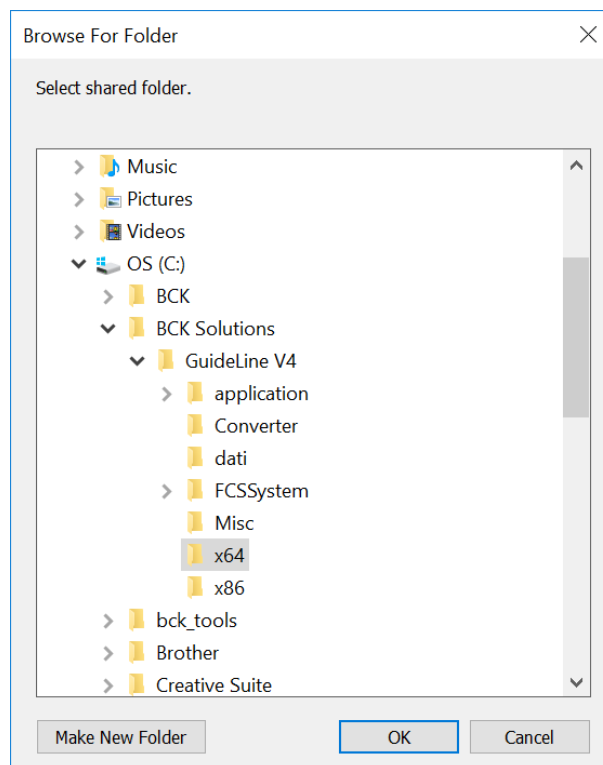
3.3 Installing GuideLine Client

This option creates a GuideLine's client, which requires to specify the license server afterwards. It can be installed in any PC in the network able to access the shared folder on the server, where GuideLine is installed.

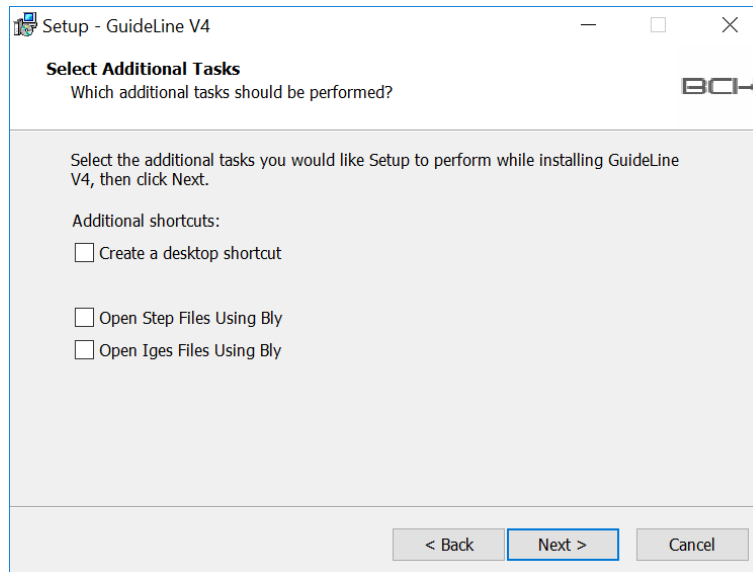
To begin with the installation, launch "GuideLine_V4_4.0.1.1.exe" and select "Client" from the installation type list (see below).



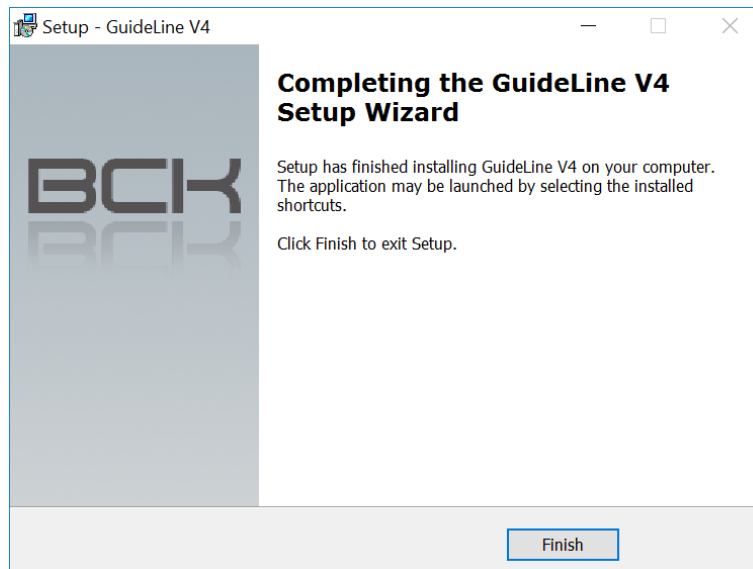
The installation requires then to browse for the shared folder where GuideLine sw is installed. Please note that the folder can also be local in the machine where the client is going to be installed.



The Additional Tasks window will display:



As you may notice, “Install NX” option is not present, since the client will read the installation on the server and have the integration installed, eventually.



4. Using GuideLine with the License Manager

4.1 First Time Activation

The first time that GuideLine (either node-locked or client floating) is launched, the following window is displayed:

Bly 3D Activation

BLY

Current License info | **Activate License**

Your MAC Address: F45C89BF0398 Copy to Clipboard

Please enter your Activation Code. Request Code via e-Mail

Open License File ...

Server IP Server Port Add

Server List Remove

Activate Cancel

In case you are running a local installation and have a node-locked license, press ... and navigate to the license file, then click the “Activate” button.

If you are launching a client of a floating license, fill in “Server IP” address and “Server Port” fields and then press “Add”. It is possible to specify several server licenses, which will be listed in the “Server List” drop-down.

Bly 3D Activation

BLY

Current License info | **Activate License**

Your MAC Address: F45C89BF0398 Copy to Clipboard

Please enter your Activation Code. Request Code via e-Mail

Open License File ...

Server IP Server Port Add

Server List Remove

192.168.1.16:8080

192.168.1.16:8080

Activate Cancel

Obsolete servers can be removed from the list pressing “Remove” button.

In order to make a client working, a floating license must be activated on the server: please, refer to chap. [License activation on a server](#) for the procedure.

Once the process is fully configured a message will confirm that you are using one of your available Licenses

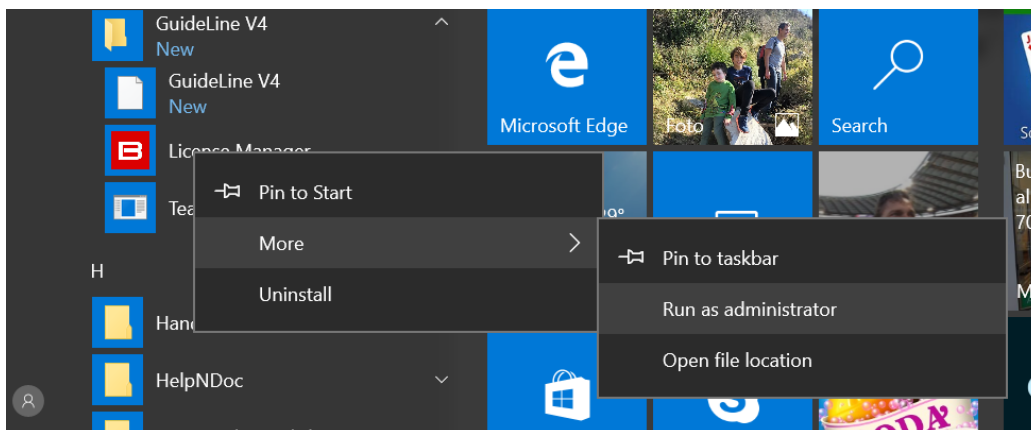
OK

You are now using 1 of the 1 licenses

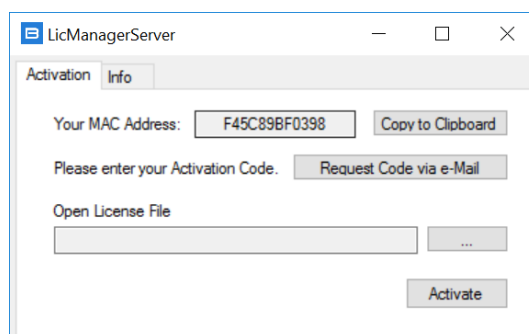
OK

4.1.1 License activation on a server

From Windows Start Menu, run License Manager as administrator (right-click->More->Run as Administrator).



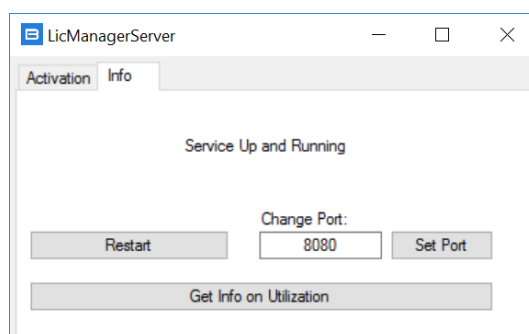
In the “Activation” Tab press and navigate to the license file, then click the “Activate” button.



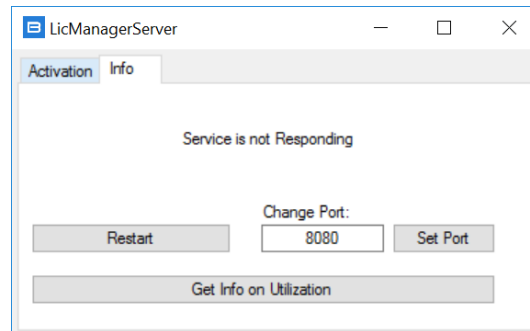
If you don't have a license file yet or is invalid, you can request it to BCK Solutions (info@bcksolutions.com), indicating the Server's MAC Address (you can Copy it to Clipboard from this window and paste it to your email).

4.1.2 Checking the service status

Once the activation process is completed, click on the “info” Tab.
If everything went fine during the installation process service should be up and running.



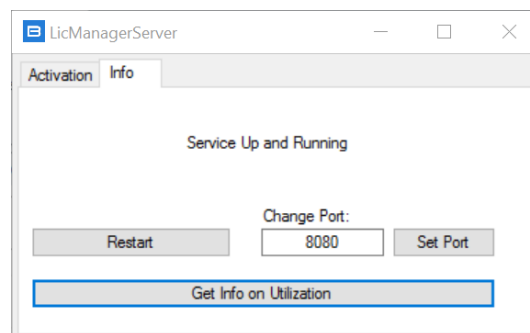
If the process is stopped or is not starting automatically, please click on the “Restart” button



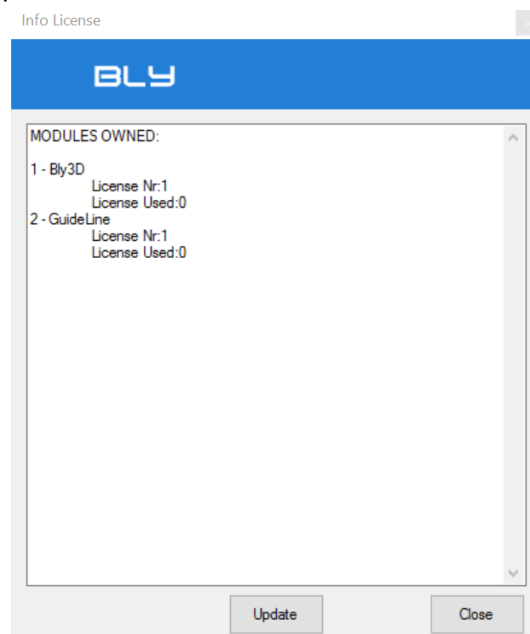
With the process stopped, the communication port can also be changed, in case of conflicts with the firewall

4.1.3 Current License Info

Navigating to the “Info” Tab, is also possible to access to the main information about the current License: press “Get Info on Utilization”

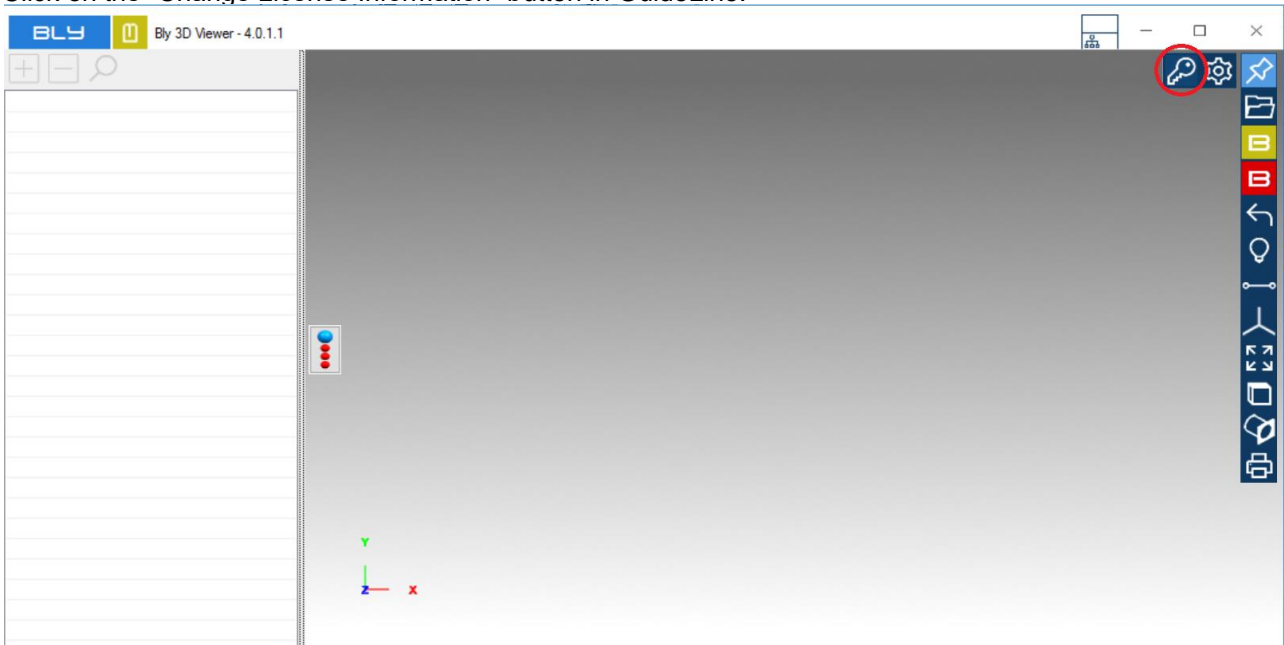


and info license window pops up listing the modules available and used in the network:



4.2 Upgrade Node Locked License to a Floating License

Click on the “Change License Information” button in GuideLine.



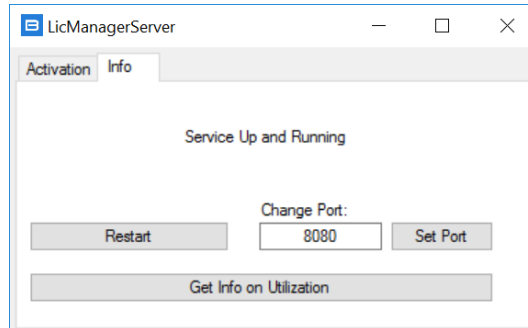
The “Bly 3D Activation” window will appear.

To use a floating license, fill in “Server IP” address and “Server Port” fields and then press “Add”. It is possible to specify several server licenses, which will be listed in the “Server List” drop-down.

4.3 Troubleshooting during Activation

If you encounter an issue during the activation process, please be sure that the IP address you have entered is the correct address of the PC on which the service is installed.

Also check if the service is currently running.



If the problem persists, please contact BCK Solutions.

4.4 TimeOut

If the server become unreachable for about 4 minutes the current instance of GuideLine will be frozen. The associated license will be freed so it can be used by another PC but the current one will be able only to save until the Server is hooked again.